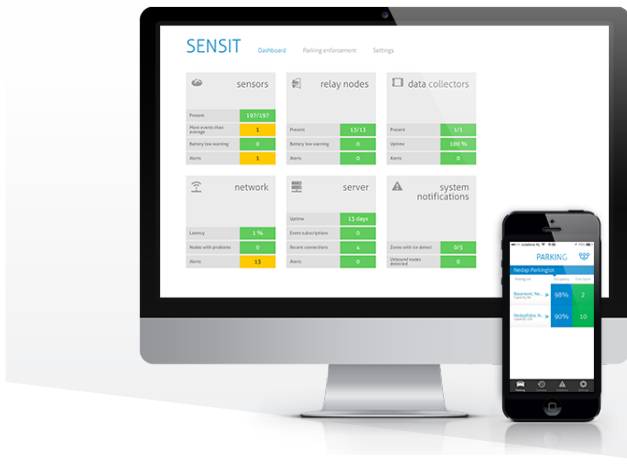


SENSIT INTERFACE SOFTWARE

| Software for configuration, administration and integration



KEY FEATURES:

- Installation, configuration and basic administration of wireless SENSIT network
- Seamlessly integration into any parking/traffic guidance or enforcement system.
- Data processing from sensors
- Transmits messages in the required format to an embedded database or software application
- Information can be viewed in Admin app

SENSIT Interface Software allows easy system integration into an enforcement, traffic guidance or parking guidance management application.

Easy installation and configuration

The SENSIT Interface Software enables easy installation of the wireless sensor network. Once the network and sensors are installed and calibrated, the sensors will automatically appear in the software. Configuration of sensors to specific parking bays, parking zone and parking lot can easily be realised.

Easy integration

The SENSIT Interface Software is featured as a hosted web server, requiring no IT investment. The software offers easy integration and transmission of data in the required format to the embedded database or management application. The SENSIT software ensures that only specified data is transmitted via a TCP/IP socket connection. A SOAP interface is available to request information from the database.

Monitoring wireless sensor network

Additionally the software configures and monitors communication of the SENSIT node network. It monitors the data transfer between the sensors and the Data Collectors. Moreover it also analyzes communication reliability of the sensor network in a graphical map, automatically alerting areas for maintenance.

Remote maintenance and support

The SENSIT Software is installed on a hosted server allowing for easy remote maintenance and support on any location world-wide.

Display configuration

Nedap displays featured with wireless communication as part of the SENSIT network can be configured from the SENSIT Interface Software to enable stand alone basic parking guidance for a single location.

Overstay configuration

Time limited parking spaces can be configured by setting the max. parking duration allowed for these specific parking zones. When the max. parking duration is exceeded an overstay event message is transmitted.

E-Parking Licenses

The parking license tool monitors the legitimate use of parking bays digitally. In the software parking bays can be designated to specific audiences and permits can easily be managed. This solution is available in two versions: as a physical onboard SENSIT EPL device and as a SENSIT Parking License app for smartphones.

SENSIT Admin App

The information that is available in the SENSIT Interface Software can be viewed with a smartphone app as well. This SENSIT Admin app is available for Android (Google Play Store) and iPhone (Apple App Store) and can be downloaded free of charge. You can use your administrator credentials to login. The app allows views on the most important administrative aspects of your SENSIT applications:

- Occupancy information per parking lot, zone and bay.
- A map with the status of each bay.
- An overview of bays that are in overstay.
- An overview of parking violations.

SPECIFICATIONS

Software functionality	SENSIT Interface Software
Installation and configuration	<ul style="list-style-type: none"> Calibrate the sensors and analyze calibration process Allocate sensor ID numbers to individual parking bays, parking zones and parking lots Configure all the equipment part of the wireless sensor network
SENSIT sensor configuration	Sensor analysis
Event configuration	<ul style="list-style-type: none"> Easy selection of required data you want to transmit to the management application Event configuration Event notification (raw sensor data or basic event message) SENSIT event information (event numbering, IR state, magnetic state)
Network	Configure communication gateway settings between the Data Collector and the SENSIT Interface Software and monitor reliability of the communication network
Occupancy information	Graphical display of the occupancy status of the parking lot
Display configuration	<ul style="list-style-type: none"> Configure Nedap display as part of the wireless Sensit network • Set display update intervals • Link display to specific parking zones • Set display viewing for different day/times • View current display view
Overstay configuration	Configure overstay time and set alert event for time limited parking bays
Part nr.	<ul style="list-style-type: none"> 8022020 Access to hosted SENSIT Interface Software 8022003 Access to hosted EPL software management
Documentation	SENSIT Interface Software_UserGuide