

bebarmatic®

FIRST CLASS PARKING

Parking Management System PLATINUM ★★★★★





Discount validator

- With thermo printing
- For up to four (4!) different discounts per ticket
- Shift report function
- Elegant desk-top casing aus Edelstahl



Entry station

Elegant stainless steel housing

- with brushed V2A front
- Laterally arranged, lockable inspection doors (safe servicing with operation in progress).

Multifunctional front

- Ticket request illuminated push-button
- 6.5" TFT VGA-LCD transfective customer information monitor (also readable when exposed to direct sunlight)
- Ticket dispensing slot
- Built-in Lexan plate, standard feature, with Contactless RFID reader (125 KHz Ro-EM4102)
- Optional Mifare, Legic, Hitag etc.
- Extension station suitable for connection of a telephone dialling device
- Optional: customer-specific fitting of, for example, threefold flush mounting frame (Siedle or similar).

Ticket processing (encoding device)

- Hybrid reader with thermoprinting and scanner for bar code tickets,
- Magnet side stripe (e.g. EC/credit card) and RFID tickets/cards (option)
- Issue of bar code tickets from two stacks of paper,
- up to $2 \times 4.500 = 9.000$ Leporello tickets with automatic pile change and paper end contact
- Parking position for special tickets with bin
- Revolutionary ticket separation without cutting tool for the avoidance of malfunctions in ticket processing
- MCBF 2,000,000 tickets (mean cycles between failures).

System architecture

- Industrial standard embedded PC with SQL database
- Ethernet – TCP/IP protocol interface
- RS485 interface or digital output to the barrier
- Type of protection: IP 54
- Pillar dimensions: height 1380, width 400/560, depth 340/500
- Weight: approx. 65 kg
- Power supply: 230 V
- Temperature range: from -25° to $+55^{\circ}$.



Barcode technology

During the last 15 years we have sold far more than 1.000 units in Germany and other European countries. The range extends from small projects (entrance, pay station, exit) up to major projects with more than 50 individual components (e.g. Heidelberg University

Hospital.) As early as 1994 we were clearly trendsetters in barcode technology in Germany, several years before our competitors discovered the advantages of that technology.





Automatic pay station

Elegant stainless steel housing

- Produced according to DIN 24975 (automatic pay stations)
- Operating height suitable for the disabled according to DIN 24972 and ADA standard
- Multiple strong-box locking
- Base of pay station with lockable inspection door for 19" insert
- Brushed V2A stainless steel front panel
- Top-mounted lighting unit as a standard feature
- Suitable for outdoor installation without weather-protection.

Multifunctional front

- Ticket insertion with acknowledgement and report issue function (single-slot)
- 6.5" TFT VGA-LCD transfective customer information monitor (also readable when exposed to direct sunshine)
- Coin acceptance for all of the usual euro coins and optional currencies
- Coin return from self-filling hoppers up to 4 types
- Banknote processing for position independent reading
- Built-in Lexan standard fitting with contactless
- RFID reader (125 kHz RO-EM4102)
- optionally Mifare, Legic, Hitag etc. for e.g. (value ticket booking/service mode)
- Intercom extension unit
- Operating keyboard for: receipt request, language selection, correction, special tickets/functions,
- Banknote return (option)
- EC / credit card processing, optionally with PIN (option)
- (Thales-Artema-modular).

Ticket processing (encoding device)

- Hybrid reader with position identification, thermoprinting and scanner for 2 x 4.500 = 9.000 bar code tickets,
- optionally also magnetic side stripe reading (e.g. EC / credit card)
- Parking position for refund tickets (subsequent insertion tickets) with bin
- MCBF 2,000,000 tickets (mean cycles between failures).

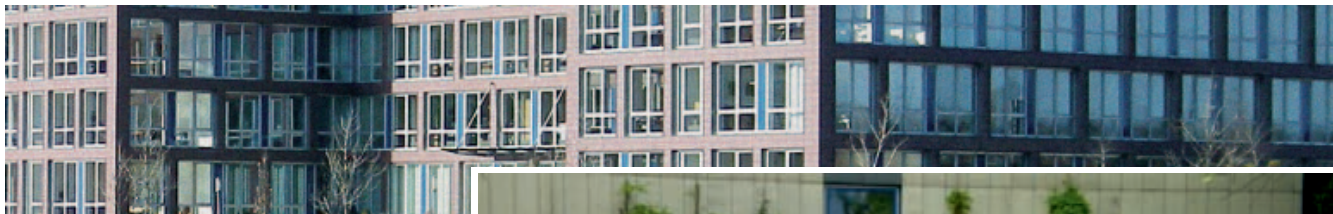
Chip&Pin EMV, PCI-compliant credit card processing

- all usual credit- and bankcards accepted wether via Magstripe or Chipreading (Visa, Mastercard, Amex, Diners, JCB, Maestro)
- debit cards possible (country specific adaption)
- Service providing to be organized by customer

System architecture

- Industrial standard embedded PC with SQL database
- Ethernet – TCP/IP protocol interface
- Type of protection: IP 54
- Dimensions pay station: height 1800, width 900, depth 450
- Weight: approx. 200 kg
- Power supply: 230 V
- Temperature range: from - 25° to + 55°.







Made in Germany

Apart from a few pre-assembled mounting parts such as the banknote acceptor unit, display and PC board, all of the major assemblies are manufactured in Germany.

All of the components used are of the highest industrial standard. Own development of conception, design and software.



Exit station

Elegant stainless steel housing

- with brushed V2A front
- Laterally arranged, lockable inspection doors (safe servicing with operation in progress).

Ticket processing (encoding device)

- Hybrid reader with position identification and scanner for $2 \times 4.500 = 9.500$ barcode tickets, optionally also magnetic side stripe reading (e.g. EC/ credit card)
- Collection basket with high capacity
- Parking position for special tickets
- MCBF 2,000,000 tickets (mean cycles between failures).



Multifunctional front

- 6.5" TFT VGA-LCD transfective customer information monitor (also readable when exposed to direct sunlight)
- Ticket insertion slot
- Built-in Lexan plate as standard fitting with contactless RFID reader (125 kHz Ro-EM4102)
- Optionally Mifare, Legic, Hitag etc.
- Extension station suitable for connection of a telephone dialling device,
- optionally – customer-specific fitting of, for example, threefold flush-mounting frames (Siedle and similar).

System architecture

- Industrial standard embedded PC with SQL database
- Ethernet – TCP/IP protocol interface
- RS485 interface or digital output to the barrier
- Type of protection: IP 54
- Pillar dimensions: height 1380, width 400/560, depth 340/500
- Weight: approx. 60 kg
- Power supply: 230 V
- Temperature range: from - 25° to + 55°.



Modular mounting plate suitable for optional installation of customer-specific fitting of for e.g. three-fold UP frames (Siedle or similar)





Options and accessories

Pedestal 2.5

- For individual fitting of special functions, e.g. subscriber reader
- as a drive-through pillar for 'car park within the multi-storey car park' with intercom extension station,
- individual built-in units such as video equipment etc.
- Elegant stainless steel housing with matt-brushed front-door.



Transponder cards (RFID 125 kHz Ro-EM4102)

- For subscribers, value tickets, special tickets etc.
- Printing possible according to customer's wishes.



Hi-res complete video solutions

- IP camera system with a high resolution 3 megapixel colour sensor
- Integrated digital video recorder (SD 16 GB)
- Video management software
- Suitable for complete integration into the bebarcode network
- bebarmatic is one of selected Mobotix Secure Partners



Door-mounted reader – online

- For processing subscriber tickets (RFID).
- Suitable as a door-mounted reader for entrances to multi-storey car parks, lifts, access of all kinds, roll-up doors etc.
- Pin code input (Ticket No.) for short-term parkers
- RS485 interface.



Discount validator

- With thermo printing
- For up to four (4!) different discounts per ticket
- Shift report function
- Elegant desk-top casing
- made of stainless steel.



License Plate recognition (LPR/ANPR)

- Video camera system connected via Ethernet for the use as access control system by using the number plate as means of entrance.
- Imprint of number plate on barcode ticket possible.
- Further information on request.

UHF passive wide-area transponder

- Latest wide-area technology with passive 866 MHz transponders (without battery!) as stickers for the windscreen or hybrid cards in EC format additionally with Legic or Mifare technology.
- Reading antenna with LED display, range > 4 m, in an elegant IP67 housing for fastening to a mast or column etc.
- RS485 interface connection to PLATINUM***** or bebar.access.



Car-park barrier PS PLATINUM

- Proven technology in a new design.
- The car-park barrier PS 30/19 which has been used thousands of times over 30 years has been adapted to the new design of the bebarcodeTM parking management system.
- Particularly suitable for multi-storey car parks with a high frequency of use
- Microprocessor control system.
- Electromechanical drive with slip clutch
- Opening time 1.9 sec. – arm length up to 3.0 m
- Voltage 1 x 230 V or 3 x 400/230 V.
- Other options: articulated arm, key-operated switch,
- Impact safeguard, photoelectric barrier.



Central control system and system architecture

Network/system architecture

- Networking via copper cable Cat.5 (and better) or
- glass fibre optical waveguide (single-mode and multi-mode); 10/100/1000baseT, wireless LAN
- Routing via existing Intranet, Internet connections, VPNs, etc.

Web Software bebar.control

- Installed on central SQL database-server as a webserver
- Javascript control via all usual web browsers such as MS Internet Explorer, Firefox etc.
- Functions like user administration, device control, counting, administration, subscriber management available via a Network LAN/WAN or even the Internet or PDA as a standard.

Remote service via any usual web browser.

- Password-protected access.

Application

Visit our home page and use the link: **'Application'**. There we have compiled examples of projects from our entire range of parking management systems, automatic bollards, turnstiles, barrier systems with video identification and access systems.



bebar.cash Point of sale (POS)

- Desktop Industrial Computer with software application for the use as a manual pay station.
- All features of web-software bebar.control available plus:
- Optional connection of operating devices such as desktop barcode scanner, RFID reader, ticket printer for the production of user defined barcode tickets and receipts.
- Reporting tool with accounting data and statistics.



Intercom system

- Intercom in digital bus technology with optional intrusion to public telephone network via separate dialling device (fixed network, mobile, internal)
- Exchange with control function.



Desktop ticket printer

- High performance printer for production of barcode tickets and receipts
- Serial production of congress/theatre/lost/replacement tickets, vouchers and receipts
- Automatic paper feed
- Connection to bebar.cash POS via USB
- Compact dimensions: 100x105x120 mm.



Subject to technical alterations.

Parkmanagement-Systeme · Schrankenanlagen · automatische Poller · Drehkreuze · Zutrittssysteme · Video Parking management systems · Automatic barriers · Bollards · Access control · Turnstiles · CCTV/ANPR

bebarmatic® Parksysteme GmbH · Fax + 49 (0)203 800 23 33 · ☎ + 49 (0)203 8 00 23-0 · E-mail: info@bebarmatic.de
P. O. Box 10 01 43 · 47001 Duisburg/Germany · Vinckeweg 15 · D-47119 Duisburg · www.bebarmatic.de