

**Schick** electronic SA presents



The new concept of frontal detection

**SP2-115**



## The SP2-115 benefits

- The costs are reduced from 30% comparing to traditional parking guidance system
- An all-in-one product ! (sensor and light indicator). Should be installed at the front of the parking space location. There is no need to put the sensor in the center of the parking space anymore.
- The vehicles detection reliability is increased.
- New detection system which eliminate the limitations due to ultrasound technology like the condition of the ground, the angle between the ground and the ceiling, the ground's junctions.
- The parking installation's conception is improved.
- The aesthetics is improved regarding the fact that there is no structure on the top of the parking space. The installation is only on the frontal part of the space without invading the center.
- The infrastructure of the installation can be used for other equipment.
- LED technology with high intensity light (6.000mcd) RGB (multicolour) for all kind of color on the front of the parking space.

### Canalis® installation



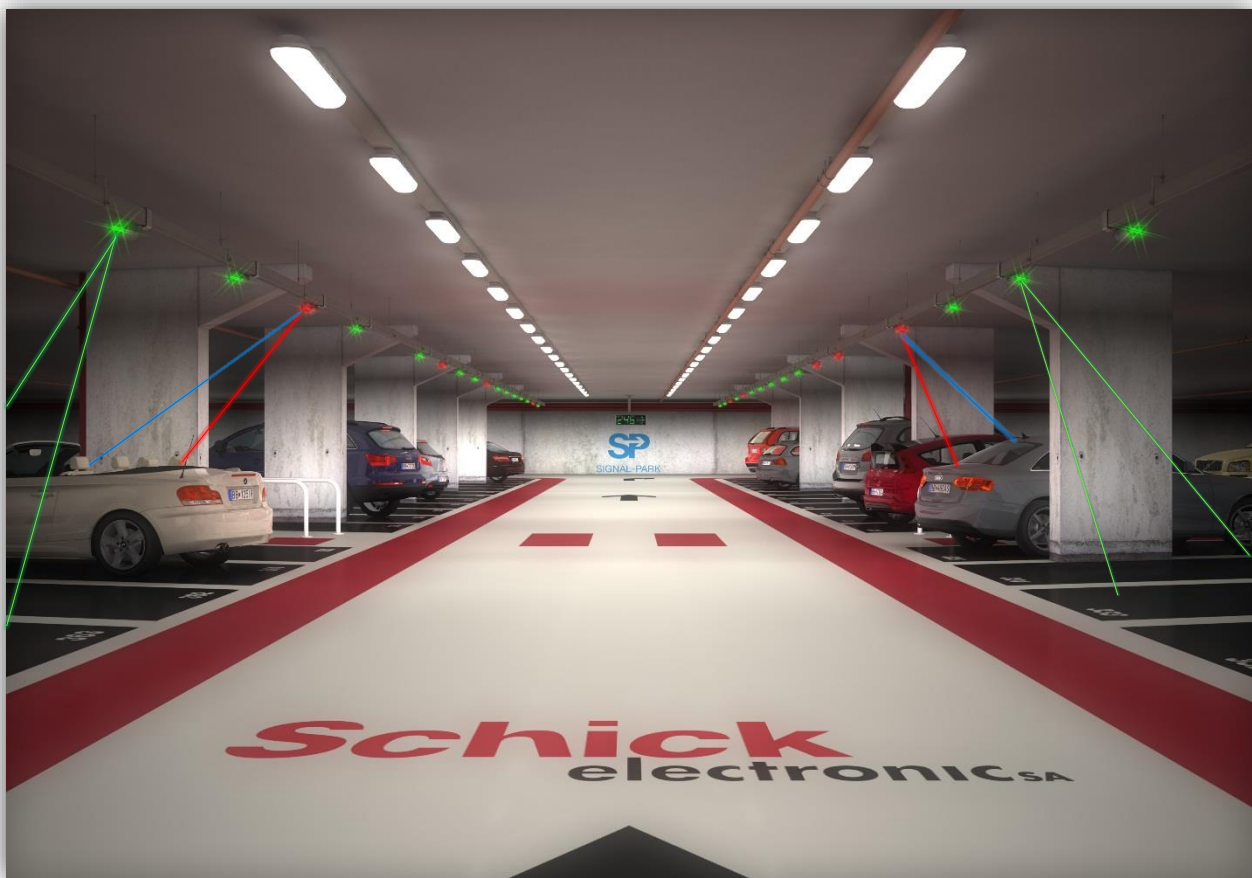
### Cable tray installation



**NEW DETECTION TECHNOLOGY WITH DOUBLE ULTRASOUND**

The **SP2-115** is for **Schick electronic SA** the achievements of 40 years' experience and developing in the vehicle detection field and parking guidance systems.

The **SP2-115** has two ultrasounds transmitter/receiver allowing to create an image of the parking space and to cover the maximum of surface to detect every object in an extremely reliable and revolutionary way.



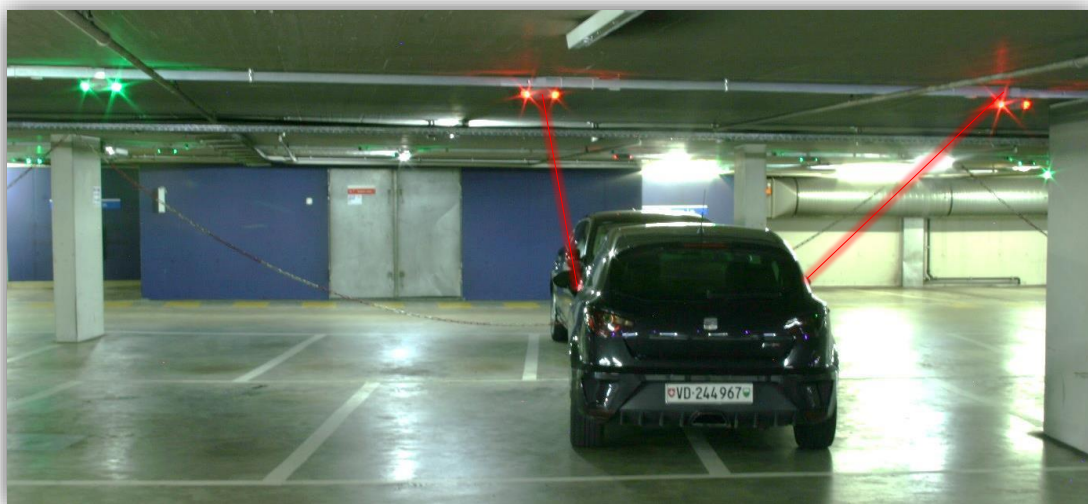
## AN ENHANCED DETECTION

- With this new way of detecting the vehicles, the **SP2-115** eliminates all the limitations due to ultrasound technology:

### Problems due to small vehicles, cabriolets sports cars



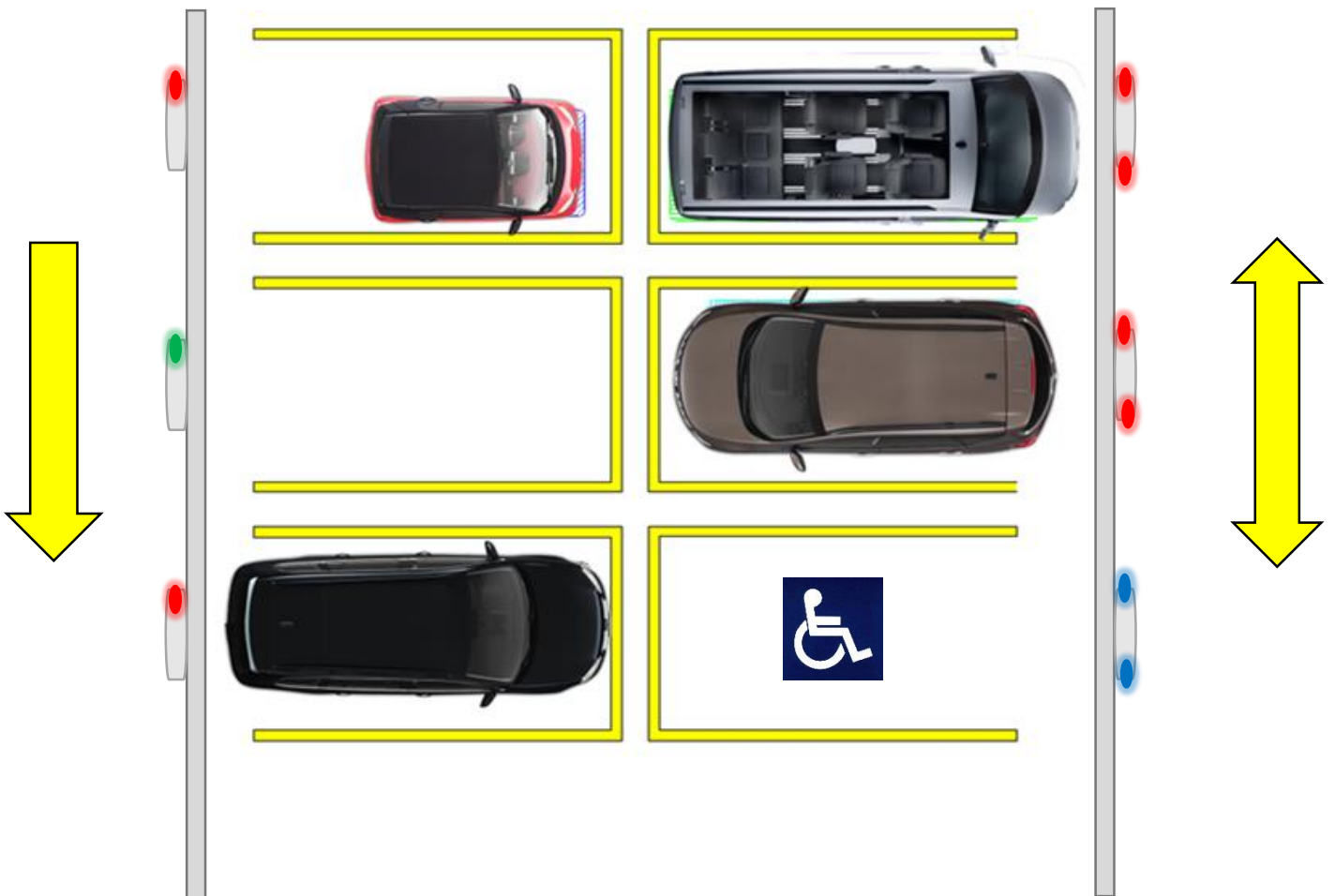
### Problems due to vehicles parked on two spaces

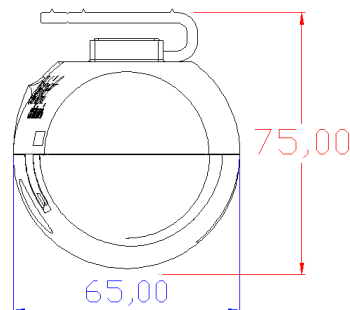
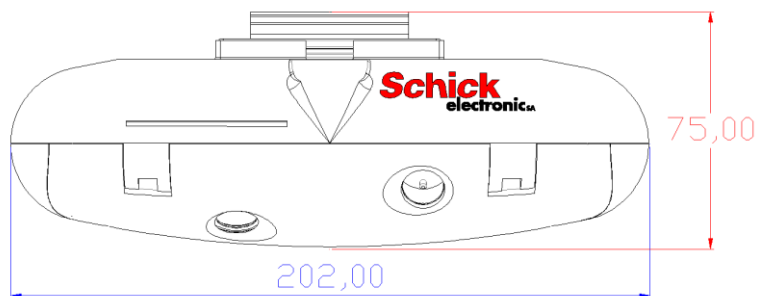


**ALL-IN-ONE DETECTOR !**

Thanks to this know technology, the detector SP2-115 performs all the functions requested as:

- Multi-coloured LED (blue for disabled persons etc)
- LED's activation of a direction or two for all type of flow direction (simple or double)
- Light indicator on the front of the parking space




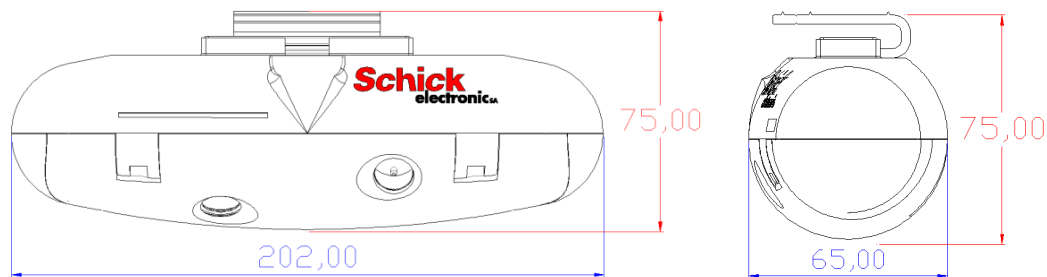


## TECHNICAL SPECIFICATIONS / CARACTERISTIQUES TECHNIQUES

Size Taille:	L202mm x H75mm x P65mm (without connectors)
Weight Poids:	189g
Housing material Boîtier:	Lateral cap: ABS, grey RAL7040 Front: PMMA (Plexiglas® XT) <i>UL94-V0 compliant plastics (plastiques conformes)</i>
Operating temperature range Température de fonctionnement:	-25°C to 55°C (-13°F to +131°F)
Storage temperature range Plage de température de stockage:	-40°C to 85°C (-40°F to +185°F)
Relative humidity Humidité relative:	5-95% RH (not condensing)
Degree of protection Degré de protection:	IP44

## ELECTRICAL / ELECTRICITÉ

Power supply: Alimentation:	48VDC nominal (43.0VDC to 48.5VDC) <i>Note: voltages above 49.0V destroys internal surge protection</i> <i>Note: tensions supérieures à 49.0V détruiront la protection interne.</i>
Insulation category Catégorie d'isolation:	Class III 
Consumption Consommation:	22mA max
Communication bus standard	RS-485 ,2 wires (half-duplex) / RS-485, 2 fils (semi-duplex)



## ULTRASONIC / ULTRASON

Detection range: Plage de détection :	0,50m à 4.0m
Frequency: Fréquence :	40Khz
Emission mode : Mode d'émission :	400µs pulses
Sound pressure Pression accoustique:	135DB @ 30cm
Total beam angle: Angle total du faisceau :	55° (horizontal) 85° (vertical)

## LED DISPLAY / AFFICHAGE LED

- The state indication of the detector uses parameterizable high intensity surface mounted RGB LED.
- Color and intensity can change slightly between productions due to components tolerances.
- On each side of the detectors there is 2 LED's (same parameter for both sides).
- With the RBG LED's all colors available
- Parameterizable for any type of traffic inside the garage (single way, double way)

- L'indication de l'état du détecteur utilise des LED's RGB paramétrables de haute intensité.
- La couleur ainsi que l'intensité des LED's peuvent changer légèrement suivant la production en raison de la tolérance des composants.
- Deux LED's de chaque côté du détecteur (même paramètre pour les deux côtés)
- Toutes les couleurs sont disponibles grâce au LED's RGB
- Paramétrables pour tout type de trafic à l'intérieur du garage (une voie de trafic, deux voies de trafic)

Size: Taille:	37x18mm (distance between LED's = 22mm)
Viewing angle (half-intensity): Angle de vue (semi-intensité):	120° (horizontal) 75° (Vertical)
Viewing angle: Angle de vue:	330° (horizontal) 90° (Vertical)